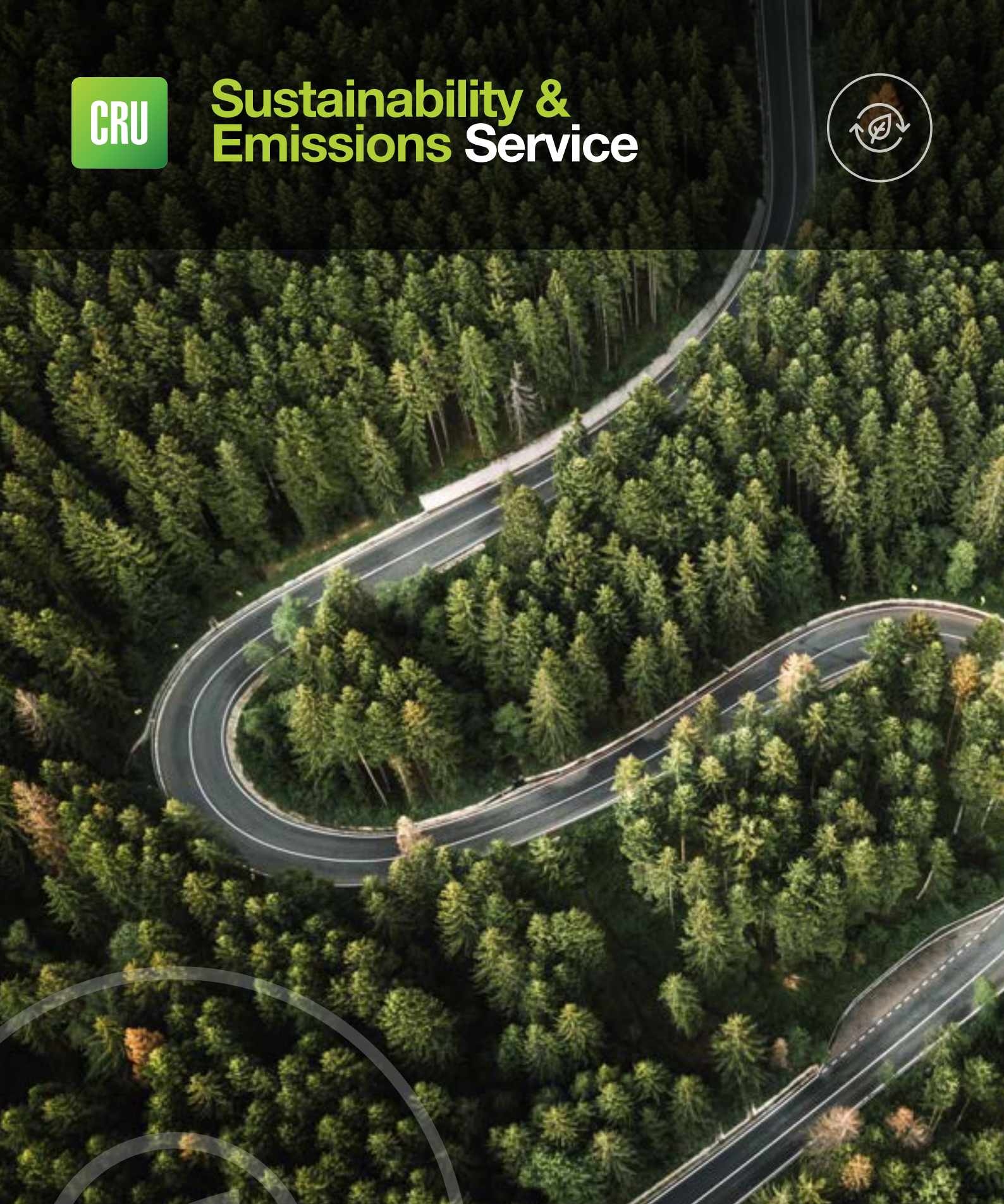




# Sustainability & Emissions Service







## Our Service

In a rapidly changing world, businesses are faced with complex challenges as they navigate the transition to a low carbon, sustainable economy.

CRU's Sustainability and Emissions Service offers a strategic solution, providing insights into how this transition impacts commodity industries and regions. By leveraging our expertise, data and independent analysis, we empower companies to navigate the sustainability landscape, make informed decisions and seize emerging opportunities.

## Insights across key areas



Emissions Trend  
Insights



Policy and  
Regulations



Carbon Markets  
and Pricing



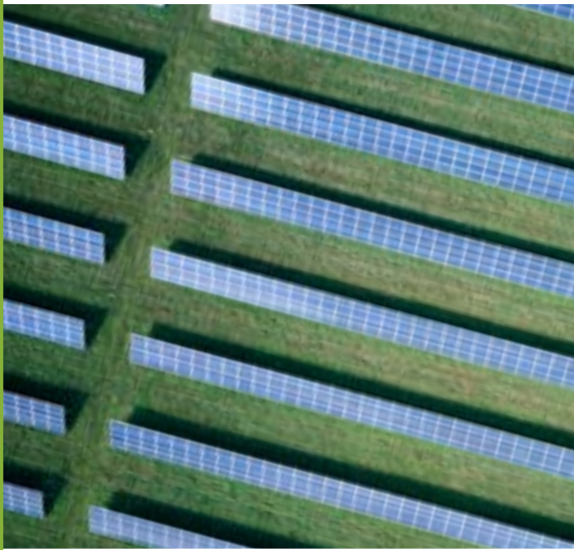
Green  
Technology

Our team of experts are here to equip you with relevant insights to develop successful strategies that will help achieve your sustainability goals.



## Emissions Trend Insights

**Gain valuable insights into emissions trends, with access to in-depth analysis of current industry and regional greenhouse gas (GHG) emissions, pathways to decarbonisation, emissions projections.**



- Understand the emissions landscape and where commodity industries currently stand on their decarbonisation journey relative to their target commitments and their peers.
- Make informed decisions and strategies based on accurate emissions projections, in-depth analysis and comprehensive data on greenhouse gas emissions.
- Benchmark your emissions performance, assess associated risks and opportunities and make informed choices for sustainable growth.

Stay informed about current emission reduction policies and targets, leveraging reliable data for effective net zero planning and decision.





## Policy and Regulations

**Understand and manage the transition to net zero by keeping tabs on climate and sustainability related policies and regulations as well as how they impact your business. Better integrate sustainability into strategic business decisions.**

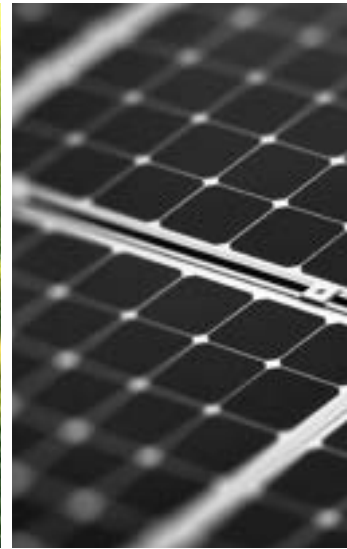


- Stay informed about evolving sustainability requirements and policy implications for companies, industries and regions, to make strategic decisions aligned with climate change, net zero transition and the sustainable economy.
- Identify opportunities and assess risks associated with policy changes, allowing you to proactively adjust your business strategies and operations.
- Leverage actionable insights to navigate the complex regulatory environment, ensuring your business remains competitive, while contributing to a more sustainable future.
- Access a global view of policy and regulatory trends, enabling you to benchmark your sustainability efforts against industry peers and identify areas for improvement.
- Enhance stakeholder engagement by demonstrating a strong understanding of policy and regulatory landscapes, building trust and credibility with investors, customers and partners.



## Carbon Markets and Pricing

**Stay ahead of carbon market dynamics and gain valuable insights into emission cost trends, with accurate forecasts, in-depth analysis and comprehensive data on carbon prices.**



- Make informed decisions and strategies based on accurate forecasts, in-depth analysis and comprehensive data on carbon prices.
- Stay ahead of the competition by anticipating changes in carbon prices and market dynamics, enabling proactive decision-making.
- Plan for the long term with confidence, understanding the drivers of carbon prices and their impact on your business.
- Anticipate future scenarios, respond to market risks and prepare for the future by utilising our robust projections and scenario analysis.





## Green Technology

**Stay ahead in navigating the sustainable energy landscape and make informed decisions with insights about green technology.**



- Strategically plan initiatives, allocate resources effectively and set achievable targets using regional abatement curves and technology cost insights.
- Gain a deep understanding of energy markets, anticipate the impact of green technologies and stay ahead of the curve in terms of costs, supply and demand and competitive advantage.
- Anticipate future price movements, assess market risks and develop resilient strategies based on insights into pricing patterns, renewable energy costs, regulations and policy incentives.
- Assess the viability and scalability of different sustainability technologies using our proprietary modelling and data, such as our carbon capture & storage (CCS) and electrolyser database.
- Access comprehensive and reliable data on scrap utilisation, collection and recovery to enhance credibility, support sustainability discussions and make informed decisions.



# Sustainability Service Tier

Our service tiers are designed to meet your specific sustainability requirements, support your unique business goals and drive meaningful progress towards a sustainable future.

Service features	Classic	Premium
Policy – insights (deep dive)	✗	✓
Policy trends (roundup)	✓	✓
Emission trends	✓	✓
Green technology insights	✗	✓
Long-term Carbon prices forecast	✗	✓
Short-term Carbon prices forecast	✓	✓
Decarbonisation and carbon market insights	✗	✓
EXPERTISE - Access to expert sustainability analysts	One-to-Many	One-to-One



## Related services

Natural complements to the Sustainability and Emissions service:

- Emissions Analysis Tools and Carbon Flow.
- Cost Analysis Tool (cost reports and cost data).
- Long Term Market Outlooks by commodity.



We are known for



Market intelligence and industry insights



Rigorous, bottom-up models and high-quality data



Transparent and robust methodologies

## Who is the Sustainability and Emissions Service for?

- Raw material producers and companies in hard-to-abate sectors.
- Governments, intergovernmental organisations and policy makers.
- Financial institutions including investment banks, insurers and investment funds.
- Commodity and carbon traders.
- Strategist and market managers within the energy and utilities sector.
- Manufacturers and fabricators.

## How this unlocks value for your business

- Centralised Knowledge Base: Access consistent and comprehensive sustainability insights across commodity industries, providing analysis that enables you to answer sustainability-related questions.
- Gain Clarity on Transition to Net Zero: Gain a comprehensive understanding of how the transition to a low-carbon, sustainable economy will impact your operations and markets, informing strategic business decisions.
- Effective Carbon Market Management: Navigate carbon markets, manage your carbon footprint and comply with regulations in hard-to-abate sectors.
- Drive Real-World Decision-Making: Stay ahead by integrating sustainability in your decision-making, driving operational efficiency and resilience for long-term success.

## Why does CRU standout?

- Joint knowledge base across sustainability and commodities that provides a holistic and coherent view of how sustainability will drive the future of markets.
- 50+ years of data-driven market insights.
- Transparent and robust methodologies.
- Deep knowledge of hard-to-abate sectors.
- Clear insight and unbiased views on how policy and markets interact.
- Trusted for data excellence.
- Access to analysts.





## Testimonials

The future speed and direction of sustainability trends might be uncertain for many, but our experience, research and global footprint will help you stay ahead of the curve.



CRU Sustainability answers our big questions in an ever-changing sustainability landscape. Their data and insights empower us to visualise a wider view of emissions right across our value chain. Trafigura is committed to supporting the transition to a low carbon future and looks forward to working with CRU Sustainability to achieve this goal.

**RICHARD HEAD**

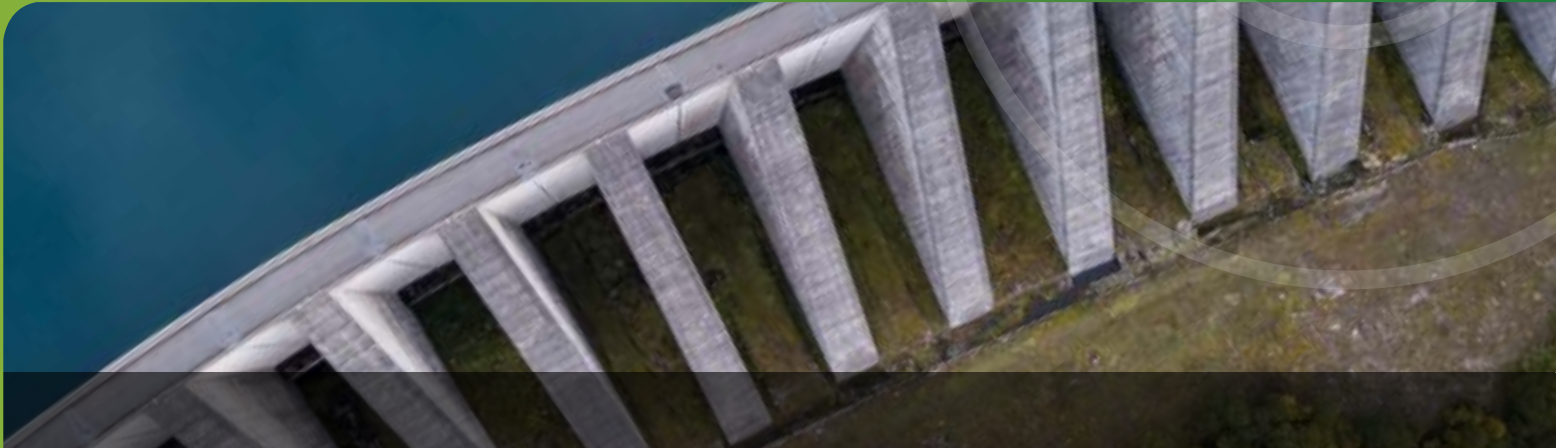
HEAD OF HEALTH, SAFETY, ENVIRONMENT & COMMUNITIES | TRAFIGURA GROUPE PTE LTD



CRU's user-friendly platform has made them our go-to source for carbon emissions data. As a leader in this industry, we take our environmental role seriously and value the CRU Sustainability resource in helping better educate the world on steel industry emissions.

**LOURENCO GONCALVES**

CHAIRMAN, PRESIDENT & CEO | CLEVELAND-CLIFFS INC.



## About CRU

Founded in 1969, CRU has a reputation for integrity and independence, delivering business intelligence across mining, metals and fertilisers markets.

The authority of CRU's market intelligence is built on a commitment to quality primary research and transparent methodologies.

Our global team gains and maintains a real understanding of hard-to-reach markets such as China, providing insight that is essential

to unravelling complex trade and supply chain dynamics.

Focused on quality, CRU is continually investing to deliver a premium, consistent experience which is flexible, personal and responsive.

[Request a demo](#)

**Learn how we can help you deliver results today**

---

Get in touch  
[sales@crugroup.com](mailto:sales@crugroup.com)

## Global offices



**CRU London Head Office**  
 1st Floor, MidCity Place  
 71 High Holborn  
 London WC1V 6EA  
 United Kingdom  
 +44 20 7903 2056



**Pittsburgh**  
 +1 724 940 7100

**Tokyo**  
 +81-3-6859-8568

**New York**  
 +1 646 628 0889

**Singapore**  
 +65 6232 2483

**Representative offices**

**Santiago**  
 +56 2 2231 3900

**Sydney**  
 +61 2 8412 2800

**Dubai**  
 +44 20 7903 2188

**São Paulo**  
 +55 11 94548 5376

**Shanghai**  
 +86 21 6028 6810

**Johannesburg**  
 +44 20 7903 2067

**Mumbai**  
 +91 22 4504 5757

**Beijing**  
 +86 10 6510 2206

**Houston**  
 +1 724 759 7875